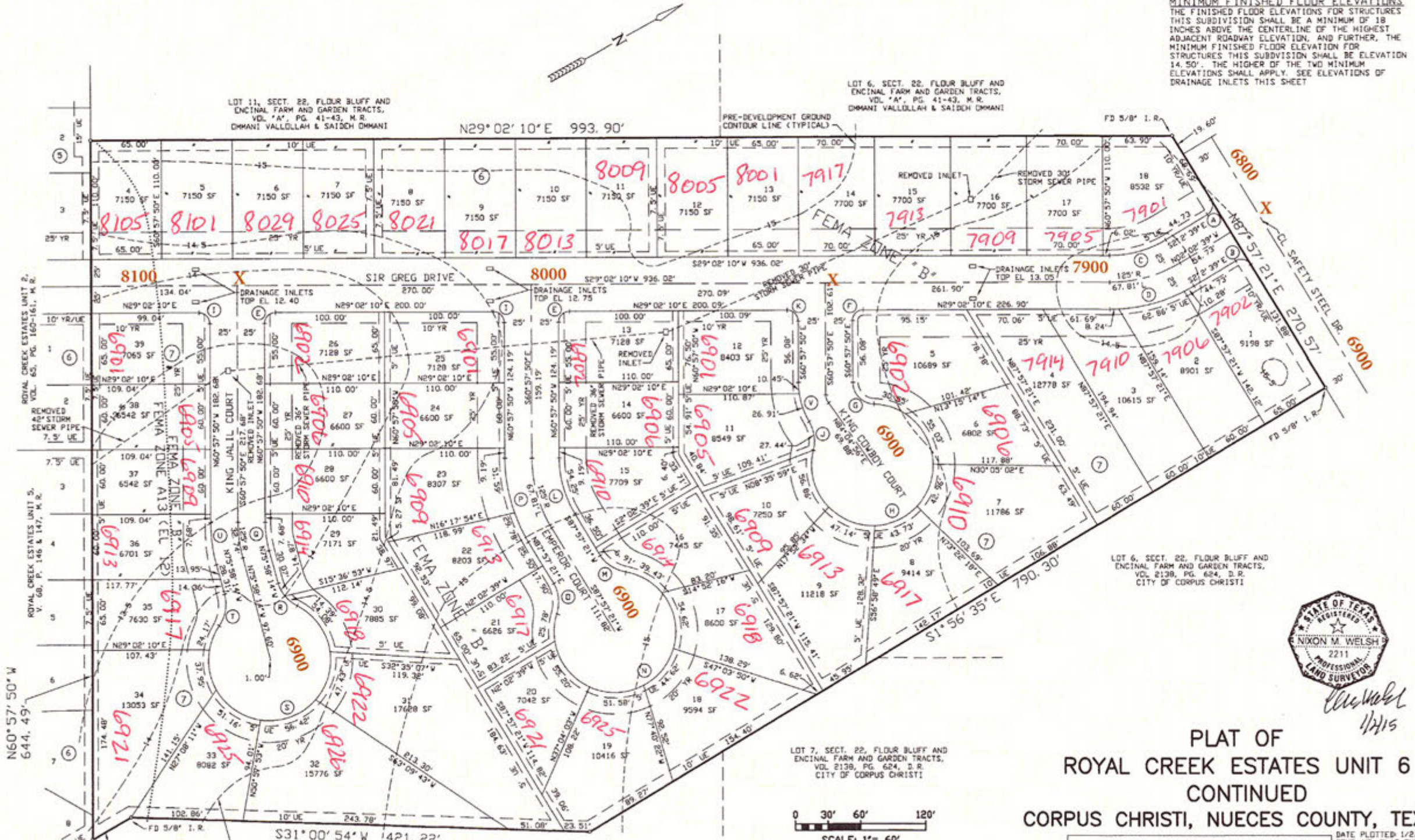


- A D=90°00'00" R=10.00' T=10.00' L=15.71' CB=N47°02'39"W CH=14.14'
- B D=90°00'00" R=10.00' T=10.00' L=15.71' CB=N48°57'21"E CH=14.14'
- C D=31°04'49" R=100.00' T=27.81' L=54.25' CB=S13°29'45"W CH=53.58'
- D D=31°04'49" R=150.00' T=41.71' L=81.37' CB=S13°29'45"W CH=80.37'
- E D=90°00'00" R=10.00' T=10.00' L=15.71' CB=N15°57'50"W CH=14.14'
- F D=90°00'00" R=10.00' T=10.00' L=15.71' CB=N15°57'50"W CH=14.14'
- G D=88°19'14" R=20.00' T=19.42' L=30.83' CB=N74°52'33"E CH=27.87'
- H D=282°39'44" R=56.00' T=44.81' L=276.27' CB=S07°57'12"E CH=69.98'
- I D=90°00'00" R=10.00' T=10.00' L=15.71' CB=N74°02'10"E CH=14.14'
- J D=44°55'37" R=35.00' T=14.47' L=27.44' CB=N69°05'09"W CH=26.75'
- K D=90°00'00" R=10.00' T=10.00' L=15.71' CB=N74°02'10"E CH=14.14'
- L D=31°04'49" R=100.00' T=27.81' L=54.25' CB=S76°30'15"E CH=53.58'
- M D=48°45'01" R=35.00' T=15.86' L=29.78' CB=S63°34'51"W CH=28.89'
- N D=277°30'03" R=56.00' T=49.11' L=271.22' CB=S02°02'39"E CH=73.65'
- O D=48°45'01" R=35.00' T=15.86' L=29.78' CB=N67°40'08"W CH=28.89'
- P D=31°04'49" R=150.00' T=41.71' L=81.37' CB=S76°30'15"E CH=80.37'
- Q D=15°00'24" R=100.00' T=13.17' L=26.19' CB=N68°28'02"W CH=26.12'
- R D=47°54'27" R=35.00' T=15.95' L=29.27' CB=N80°04'33"E CH=28.42'
- S D=277°29'24" R=56.00' T=49.12' L=271.21' CB=S14°52'02"W CH=73.65'
- T D=49°34'57" R=35.00' T=16.17' L=30.29' CB=S51°10'45"E CH=29.35'
- U D=15°00'24" R=150.00' T=19.76' L=39.29' CB=S68°28'02"E CH=39.17'
- V D=30°35'00" R=70.00' T=19.14' L=37.37' CB=S76°15'24"E CH=36.93'

**MINIMUM FINISHED FLOOR ELEVATIONS**  
 THE FINISHED FLOOR ELEVATIONS FOR STRUCTURES THIS SUBDIVISION SHALL BE A MINIMUM OF 18 INCHES ABOVE THE CENTERLINE OF THE HIGHEST ADJACENT ROADWAY ELEVATION, AND FURTHER, THE MINIMUM FINISHED FLOOR ELEVATION FOR STRUCTURES THIS SUBDIVISION SHALL BE ELEVATION 14.50'. THE HIGHER OF THE TWO MINIMUM ELEVATIONS SHALL APPLY. SEE ELEVATIONS OF DRAINAGE INLETS THIS SHEET



*Nixon M. Welsh*  
 1/14/15

**PLAT OF  
 ROYAL CREEK ESTATES UNIT 6  
 CONTINUED  
 CORPUS CHRISTI, NUECES COUNTY, TEXAS**

BASS & WELSH ENGINEERING  
 FIRM NO. F-52, 3054 S. ALAMEDA ST.  
 CORPUS CHRISTI, TEXAS 78404

DATE PLOTTED 1/2/15  
 COMP. NO. PLAT-SHR.DWG  
 JOB NO. 13019  
 SCALE: 1" = 60'  
 PLAT SCALED SAME  
 SHEET 2 OF 2