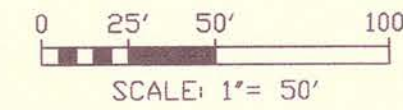


# PLAT OF PARKVIEW UNIT 5 (CONTINUED) CORPUS CHRISTI, NUECES COUNTY, TEXAS

BASS & WELSH ENGINEERING  
FIRM NO. F-52, 3054 S. ALAMEDA ST.  
CORPUS CHRISTI, TEXAS 78404



### CURVE DATA:

- |   |   |  |   |
|---|---|--|---|
| <b>A</b> Δ=01°49'37"<br>R=640.00'<br>T=10.20'<br>L=20.41'<br>CB=N16°08'23"W<br>CH=20.41'    | <b>B</b> Δ=01°52'02"<br>R=600.00'<br>T=9.78'<br>L=19.55'<br>CB=S16°05'25"E<br>CH=19.55'     | <b>C</b> Δ=01°49'32"<br>R=560.00'<br>T=8.92'<br>L=17.84'<br>CB=S16°07'42"E<br>CH=17.84'    | <b>D</b> Δ=90°00'00"<br>R=20.00'<br>T=20.00'<br>L=31.42'<br>CB=S27°58'36"W<br>CH=28.28'     |
| <b>E</b> Δ=45°40'06"<br>R=100.00'<br>T=42.11'<br>L=79.71'<br>CB=S84°11'21"E<br>CH=77.61'    | <b>F</b> Δ=45°40'06"<br>R=125.00'<br>T=52.63'<br>L=99.63'<br>CB=S84°11'21"E<br>CH=97.02'    | <b>G</b> Δ=45°40'06"<br>R=150.00'<br>T=63.16'<br>L=119.56'<br>CB=N84°11'21"W<br>CH=116.42' | <b>H</b> Δ=90°00'00"<br>R=20.00'<br>T=20.00'<br>L=31.42'<br>CB=N62°01'24"W<br>CH=28.28'     |
| <b>I</b> Δ=25°45'31"<br>R=600.00'<br>T=137.19'<br>L=269.74'<br>CB=S04°08'45"E<br>CH=267.48' | <b>J</b> Δ=25°45'32"<br>R=560.00'<br>T=128.05'<br>L=251.76'<br>CB=N04°08'45"W<br>CH=249.65' | <b>K</b> Δ=90°00'00"<br>R=20.00'<br>T=20.00'<br>L=31.42'<br>CB=N36°16'07"W<br>CH=28.28'    | <b>L</b> Δ=90°00'00"<br>R=20.00'<br>T=20.00'<br>L=31.42'<br>CB=N36°16'07"W<br>CH=28.28'     |
| <b>M</b> Δ=19°54'49"<br>R=100.00'<br>T=17.55'<br>L=34.76'<br>CB=S71°18'42"E<br>CH=34.58'    | <b>N</b> Δ=19°54'49"<br>R=125.00'<br>T=21.94'<br>L=43.44'<br>CB=S71°18'42"E<br>CH=43.23'    | <b>O</b> Δ=19°54'49"<br>R=150.00'<br>T=26.33'<br>L=52.13'<br>CB=N71°18'42"W<br>CH=51.87'   | <b>P</b> Δ=41°24'35"<br>R=35.00'<br>T=13.23'<br>L=25.30'<br>CB=N82°03'35"W<br>CH=24.75'     |
| <b>Q</b> Δ=172°49'09"<br>R=45.00'<br>T=717.18'<br>L=135.73'<br>CB=N16°21'18"W<br>CH=89.82'  | <b>R</b> Δ=41°24'35"<br>R=35.00'<br>T=13.23'<br>L=25.30'<br>CB=S49°20'59"W<br>CH=24.75'     | <b>S</b> Δ=90°00'00"<br>R=10.00'<br>T=10.00'<br>L=15.71'<br>CB=S16°21'18"E<br>CH=14.14'    | <b>T</b> Δ=25°45'31"<br>R=640.00'<br>T=146.34'<br>L=287.73'<br>CB=S04°08'45"E<br>CH=285.31' |

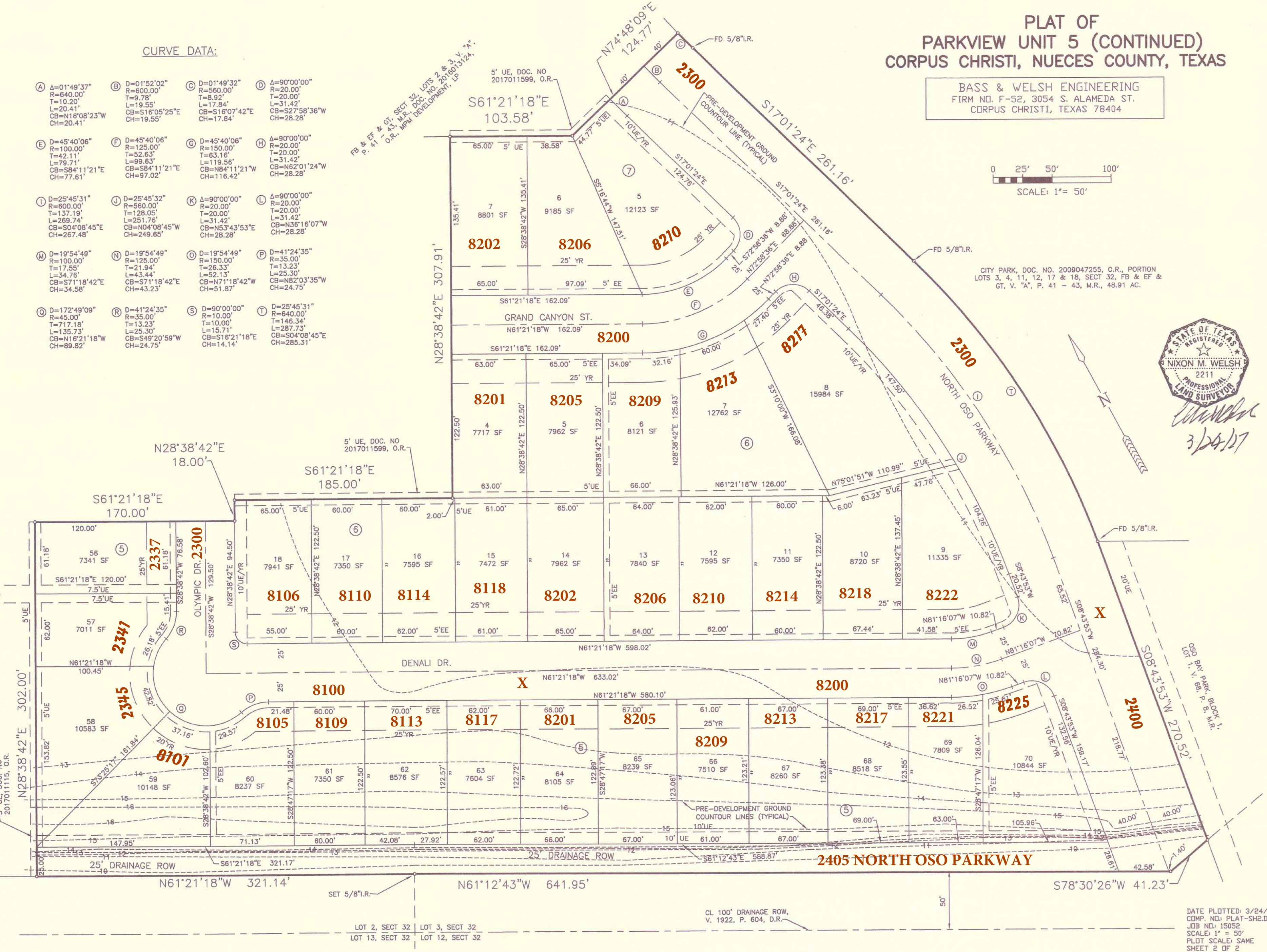
5' UE, DOC. NO. 2017011599, O.R.  
FB & EF & GT, SECT 32, LOTS 2 & 3, V. "A", P. 41 - 43, M.R., DOC. NO. 2016013124, O.R., MPM DEVELOPMENT, LP

CITY PARK, DOC. NO. 2009047255, O.R., PORTION LOTS 3, 4, 11, 12, 17 & 18, SECT 32, FB & EF & GT, V. "A", P. 41 - 43, M.R., 48.91 AC.



*Nixon M. Welsh*  
3/24/17

5' UE, DOC. NO. 2017011115, O.R.  
FB & EF & GT, SECT 32, LOTS 2 & 3, V. "A", P. 41 - 43, M.R., DOC. NO. 2016013124, O.R., MPM DEVELOPMENT, LP



DATE PLOTTED: 3/24/17  
COMP. NO: PLAT-SH2.DWG  
JOB NO: 15052  
SCALE: 1" = 50'  
PLOT SCALE: SAME  
SHEET 2 OF 2