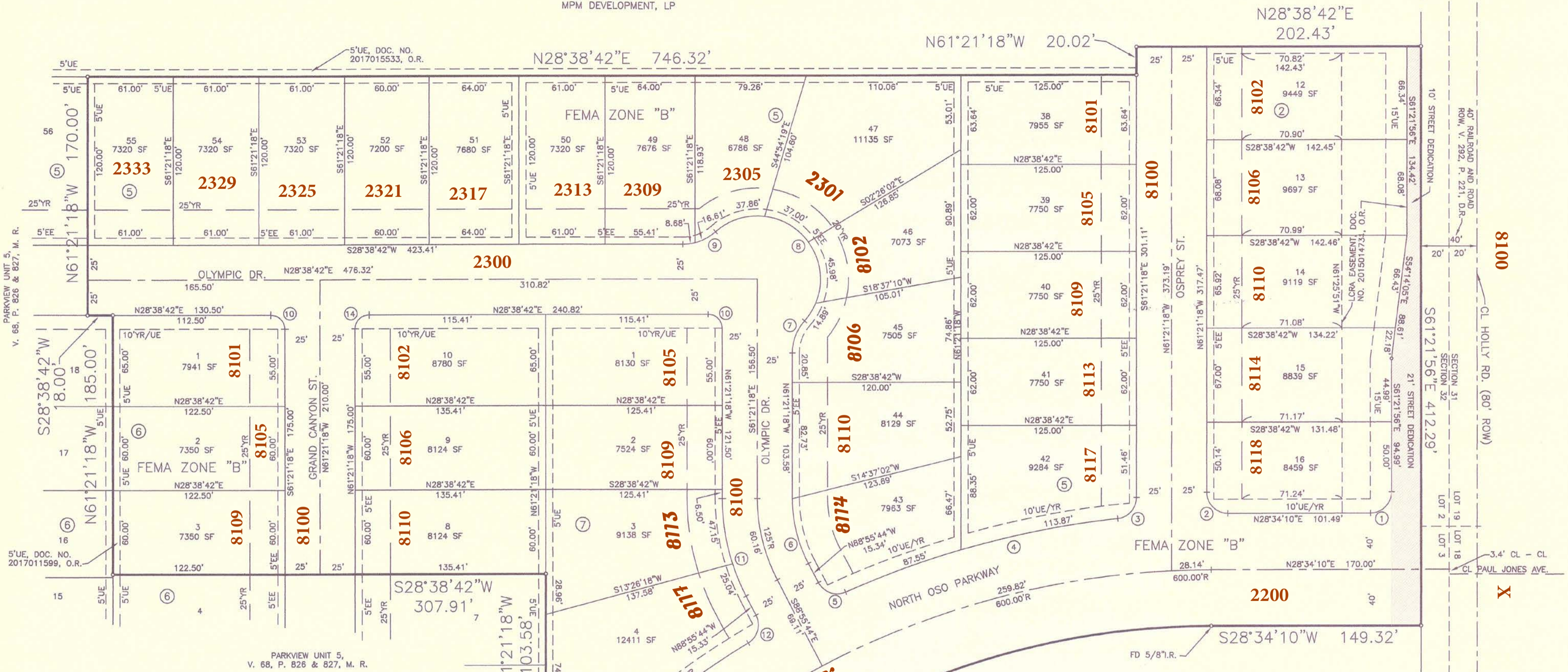


FB & EF & GT, SECT 32, LOTS 1 & 2,
V. "A", P. 41 - 43, M.R., DOC. NO.
2016013124, O.R.
MPM DEVELOPMENT, LP



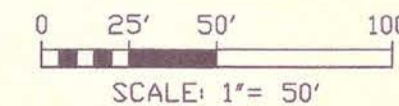
CURVE DATA:

- | | | | |
|---|--|--|---|
| ①
Δ=89°56'11"
R=15.00'
T=14.98'
L=23.55'
CB=N16°23'53"W
CH=21.20' | ⑤
Δ=86°29'56"
R=15.00'
T=14.11'
L=22.65'
CB=S47°49'18"W
CH=20.56' | ⑨
Δ=41°24'35"
R=35.00'
T=13.23'
L=25.30'
CB=N07°56'25"E
CH=24.75' | ⑬
Δ=12°46'06"
R=640.00'
T=71.61'
L=142.62'
CB=S08°48'48"E
CH=142.33' |
| ②
Δ=90°04'32"
R=15.00'
T=15.02'
L=23.58'
CB=S73°36'26"W
CH=21.23' | ⑥
Δ=27°34'26"
R=100.00'
T=24.54'
L=48.13'
CB=N75°08'31"W
CH=47.66' | ⑩
Δ=90°00'00"
R=10.00'
T=10.00'
L=15.71'
CB=S73°38'42"W
CH=14.14' | ⑭
Δ=90°00'00"
R=10.00'
T=10.00'
L=15.71'
CB=N16°21'18"W
CH=14.14' |
| ③
Δ=83°57'35"
R=15.00'
T=13.50'
L=21.98'
CB=N19°22'31"W
CH=20.07' | ⑦
Δ=41°24'35"
R=35.00'
T=13.23'
L=25.30'
CB=N40°39'01"W
CH=24.75' | ⑪
Δ=27°34'26"
R=150.00'
T=36.81'
L=72.19'
CB=N75°08'31"W
CH=71.49' | ⑮
Δ=90°00'00"
R=15.00'
T=10.00'
L=15.71'
CB=S73°38'42"W
CH=14.14' |
| ④
Δ=18°01'56"
R=640.00'
T=101.55'
L=201.42'
CB=N13°35'19"E
CH=200.59' | ⑧
Δ=172°49'09"
R=45.00'
T=717.18'
L=135.73'
CB=S73°38'42"W
CH=89.82' | ⑫
Δ=86°29'59"
R=15.00'
T=14.11'
L=22.65'
CB=N45°40'44"W
CH=20.56' | ⑯
Δ=43°46'06"
R=580.00'
T=224.94'
L=427.78'
CB=S06°41'12"W
CH=417.46' |

PLAT OF
PARKVIEW UNIT 4 (CONTINUED)
CORPUS CHRISTI, NUECES COUNTY, TEXAS

BASS & WELSH ENGINEERING
FIRM NO. F-52, 3054 S. ALAMEDA ST.
CORPUS CHRISTI, TEXAS 78404

DATE PLOTTED: 04/21/17
COMP. NO. PLAT-SH2.DWG
JOB NO. 15021
SCALE: 1" = 50'
PLOT SCALE: SAME
SHEET 2 OF 2



8100

X

8200